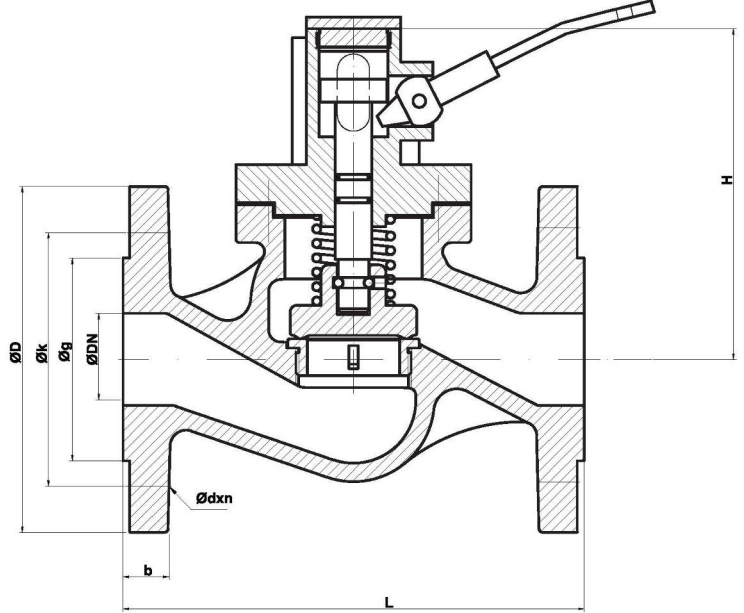
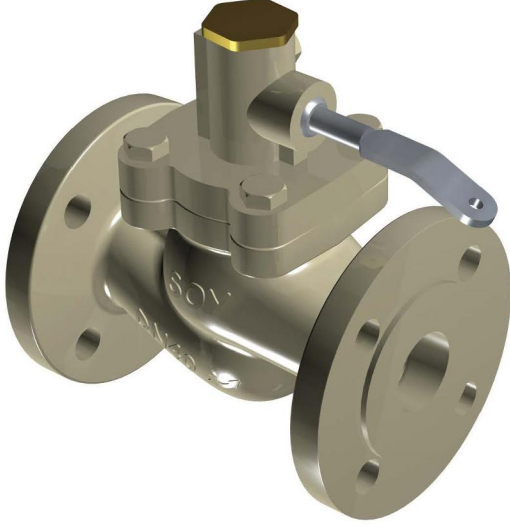




**SOYVALVE**

**Dünyanın Vanasını Üretiyoruz / We Produce The World's Valve**

## **Dreyfn Vanası(Düz Tip - Yaylı)** Self Closing Valve(Straight Type-Spring Loaded)



NO	PARÇA ADI	PART NAME	MATERIAL	DN	ØD	Øk	Øg	L	b	H	STROK	Ødxn	KG
1	GÖVDE	BODY	GGG40.3	15	95	65	45	130	14	126	9	14x4	4,5
2	SİT	SEAT	Alu Bronze / AISI 420	20	105	75	58	150	16	126	9	14x4	5,4
3	KAPAK	BONNET	GGG40.3	25	115	85	68	160	16	129	12	14x4	6
4	MİL	STEM	X20Cr13	32	140	100	78	180	18	134	13	18x4	8,4
5	O-RİNG	O-RING	VITON	40	150	110	88	200	18	149	15	18x4	10,4
6	YAY	SPRING	SPRING STEEL C	50	165	125	102	230	20	156	20	18x4	15
7	KLAPE	DISC	X20Cr13	65	185	145	122	290	20	167	22	18x4	20
8	BİLYA	BALLS	X20Cr5Ni8	80	200	160	138	310	22	185	25	18x8	23
9	SETUSKUR	SCREW	AISI 304	100	220	180	158	350	24	221	30	18x8	36
10	KOL	LEVER	AISI 304	125	250	210	188	400	26	251	34	18x8	55
11	CİVATA	SCREW	AISI 304	150	285	240	212	480	26	303	42	22x8	74
12	SETUSKUR CİVATA	GRUB SCREW	8.8 STEEL										
13	KAPAK VİDASI	BONNET SCREW	Ms 58										

### **UYGULAMA ALANLARI / APPLICATIONS**

YAĞ VE DİZEL SİSTEMLERDE / OIL AND FUEL SYSTEMS  
ÇALIŞMA ŞARTLARI / WORKING CONDITIONS : DIN 2401  
BAĞLANTILAR / ENDS : DIN 2501

VANA BOYUTLARI / VALVE DIMENSIONS : DIN 3202 F1  
ÇALIŞMA SICAKLIĞI / WORKING TEMP. : -10 °C / +220 °C  
ÇALIŞMA BASINCI / WORKING PRESSURE : PN16

FACE TO FACE DIMENSIONS : TS EN 558-1